

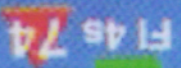
Pelican Bay

Cayo Costa Sate Park Dock →

Johnson Shoals

Boca Grande Channel

26 42.32
82 14.75





Patricio Island >

Mondongo Island >

< Point Blanco

Bird Key >

Middle Key >

Cabbage Key

< Useppa

69
FI 4s

64
FI 4s

63
FI 4s

60
FI 4s

58



58

57
Fl 4s

56

54
Fl 4s

52
Fl 4s

Pejuan Point
26 37.47
82 13.13

Pejuan Cove

Post

White PVC pipe

51
Fl 4s

50

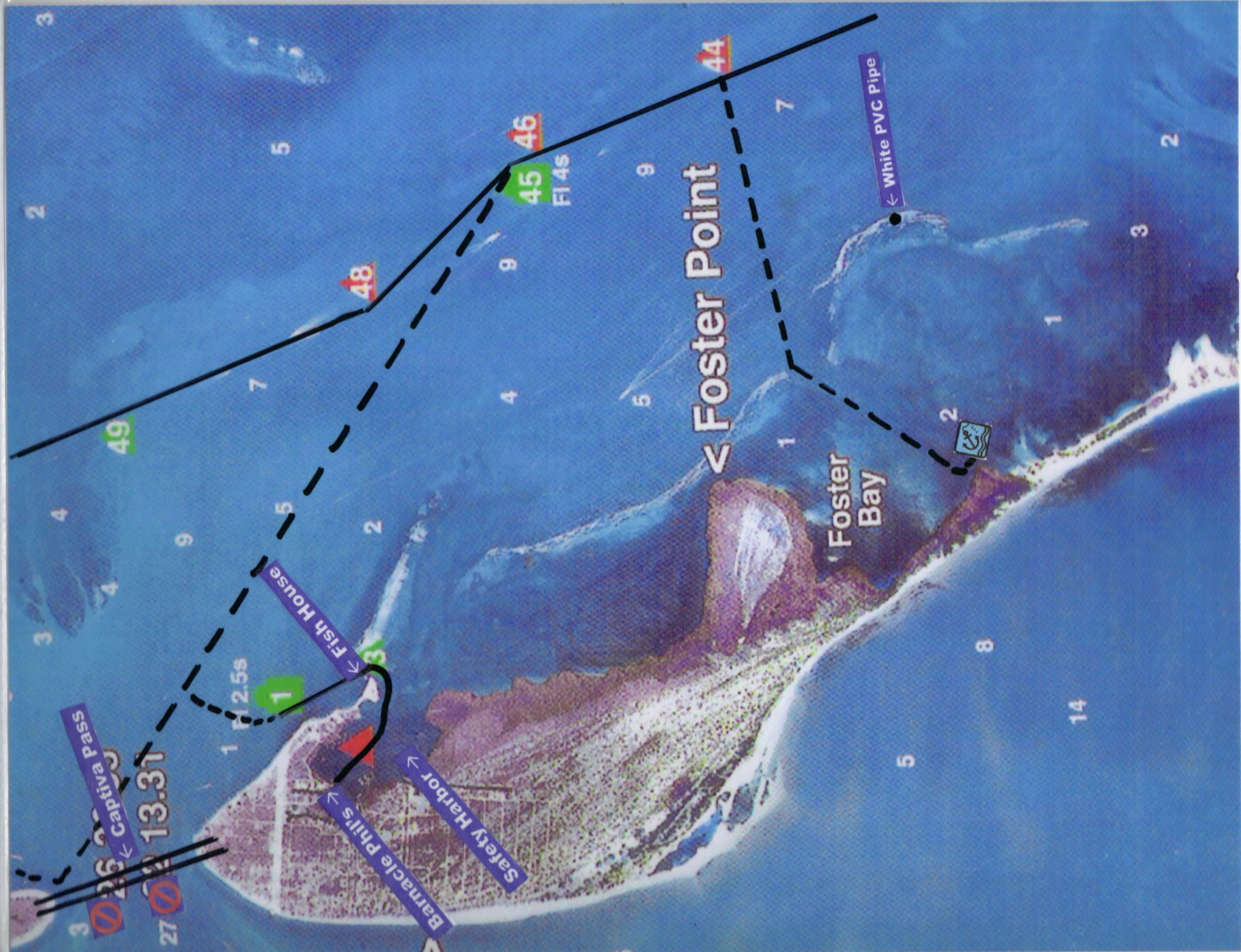
26
82

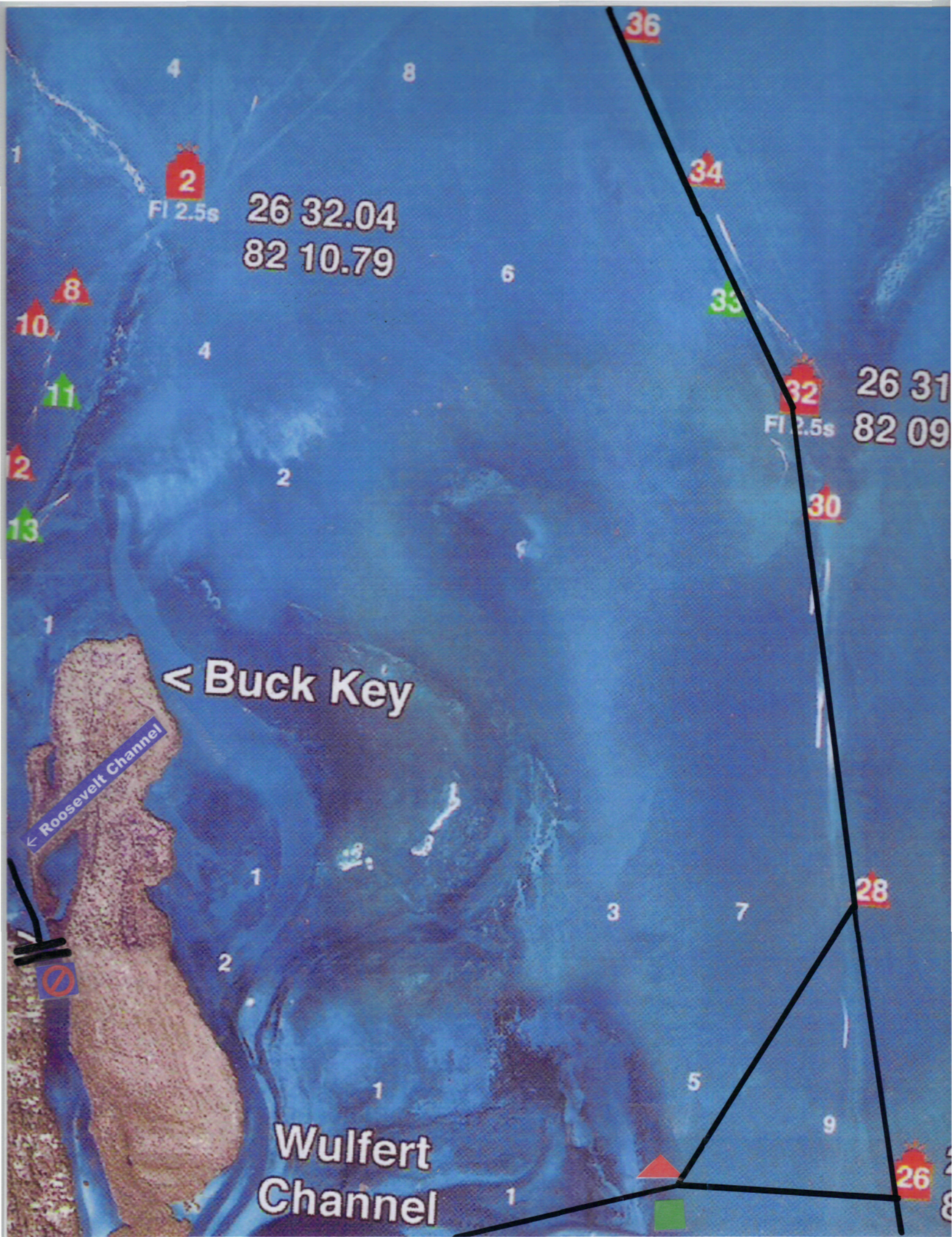
Captiva Pass
26 36.5
82 13.31

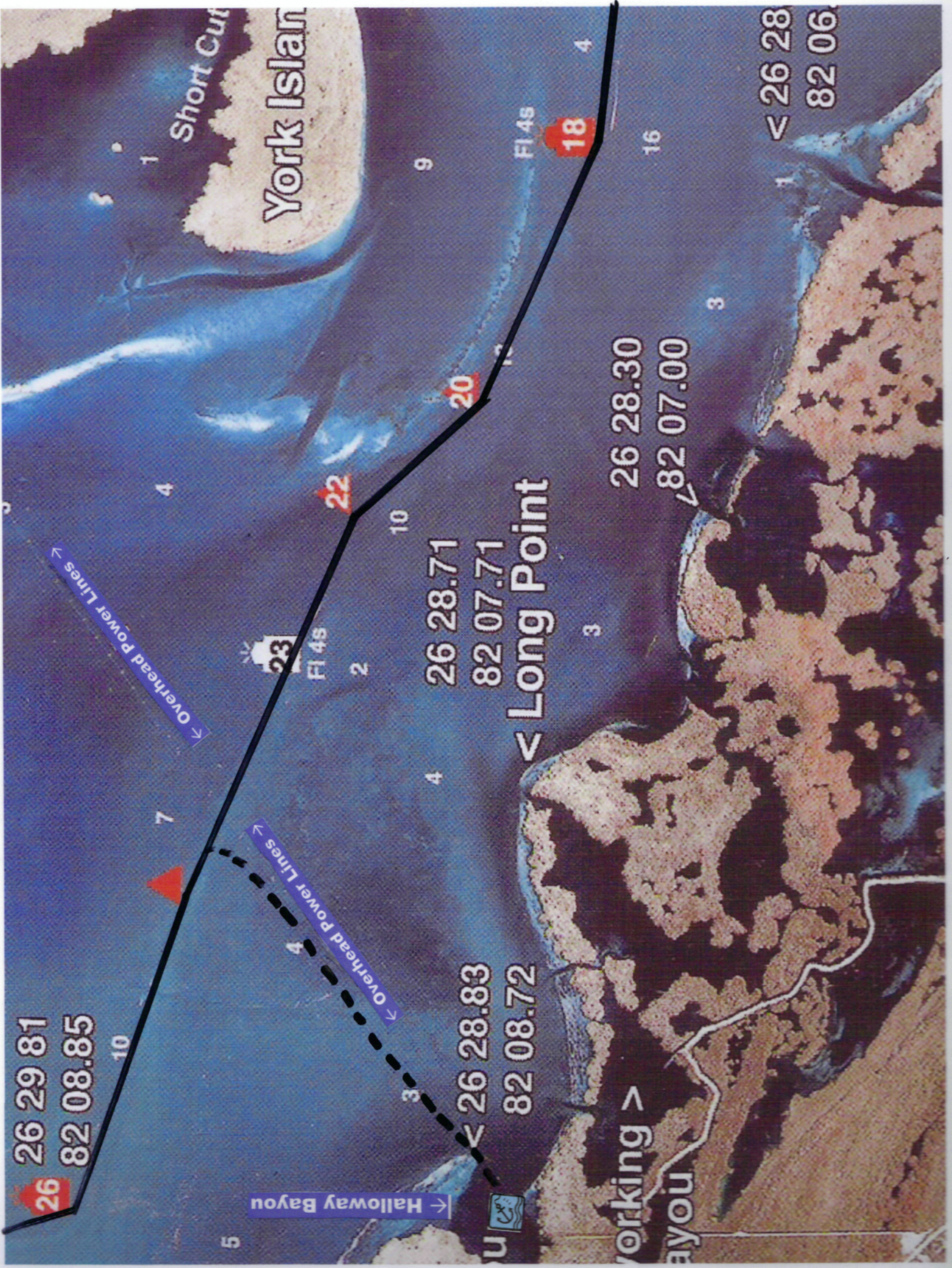
Captiva
Pass

49
Fl 4s

Fl 2.5s







26 29.81
82 08.85

26 28.71
82 07.71

< 26 28.83
82 08.72

< Long Point

26 28.30
82 07.00

< 26 28
82 06

Short Cut
York Island

Halloway Bayou

Working >
Layou

FI 45

23
FI 45

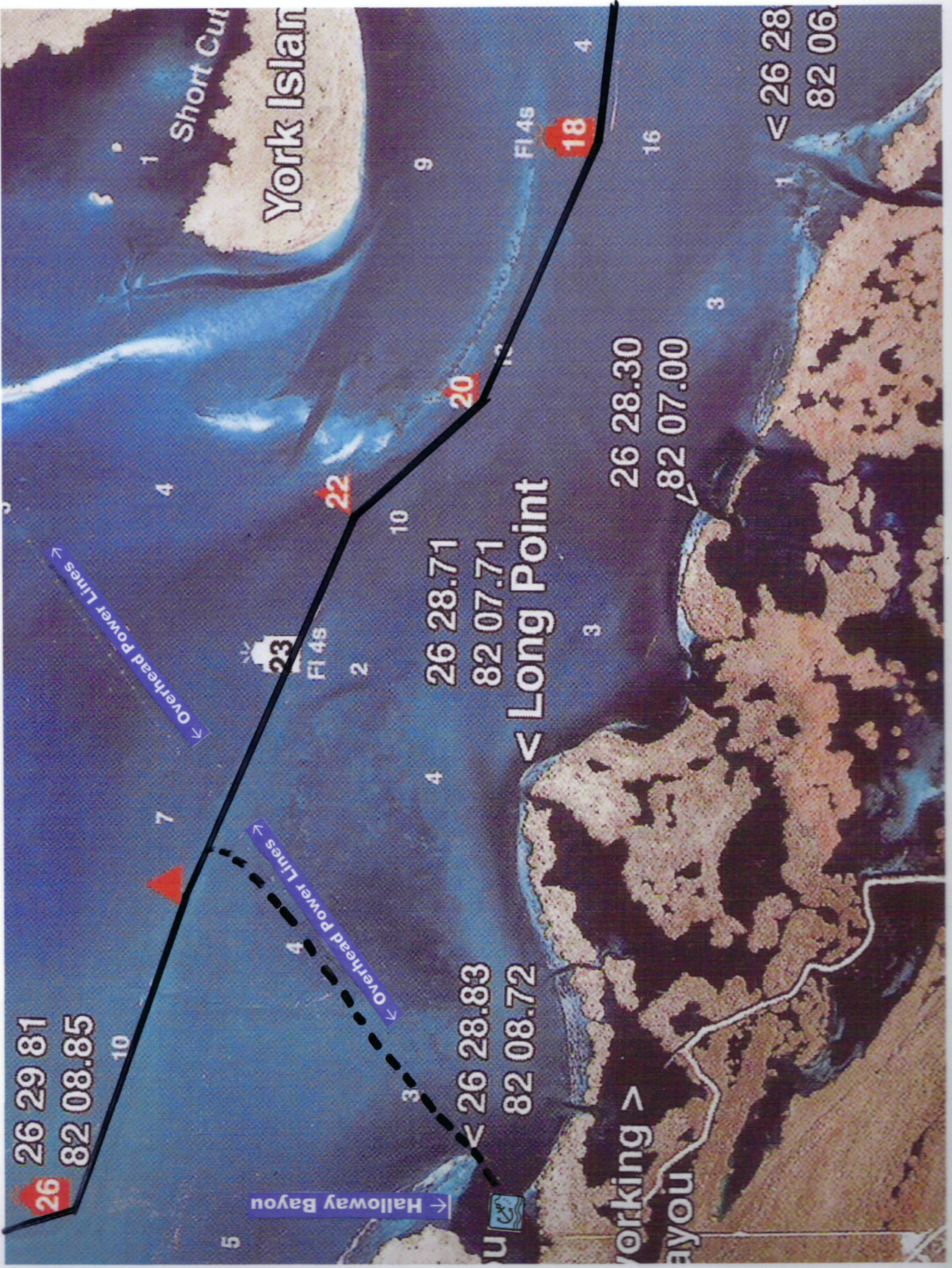
18

22

20

< Overhead Power Lines

< Overhead Power Lines



York Island

Short Cutoff

Waterfront Restaurant

St. James City

26 29.29
82 04.99

12

FI 2.5s

Woodrings Point

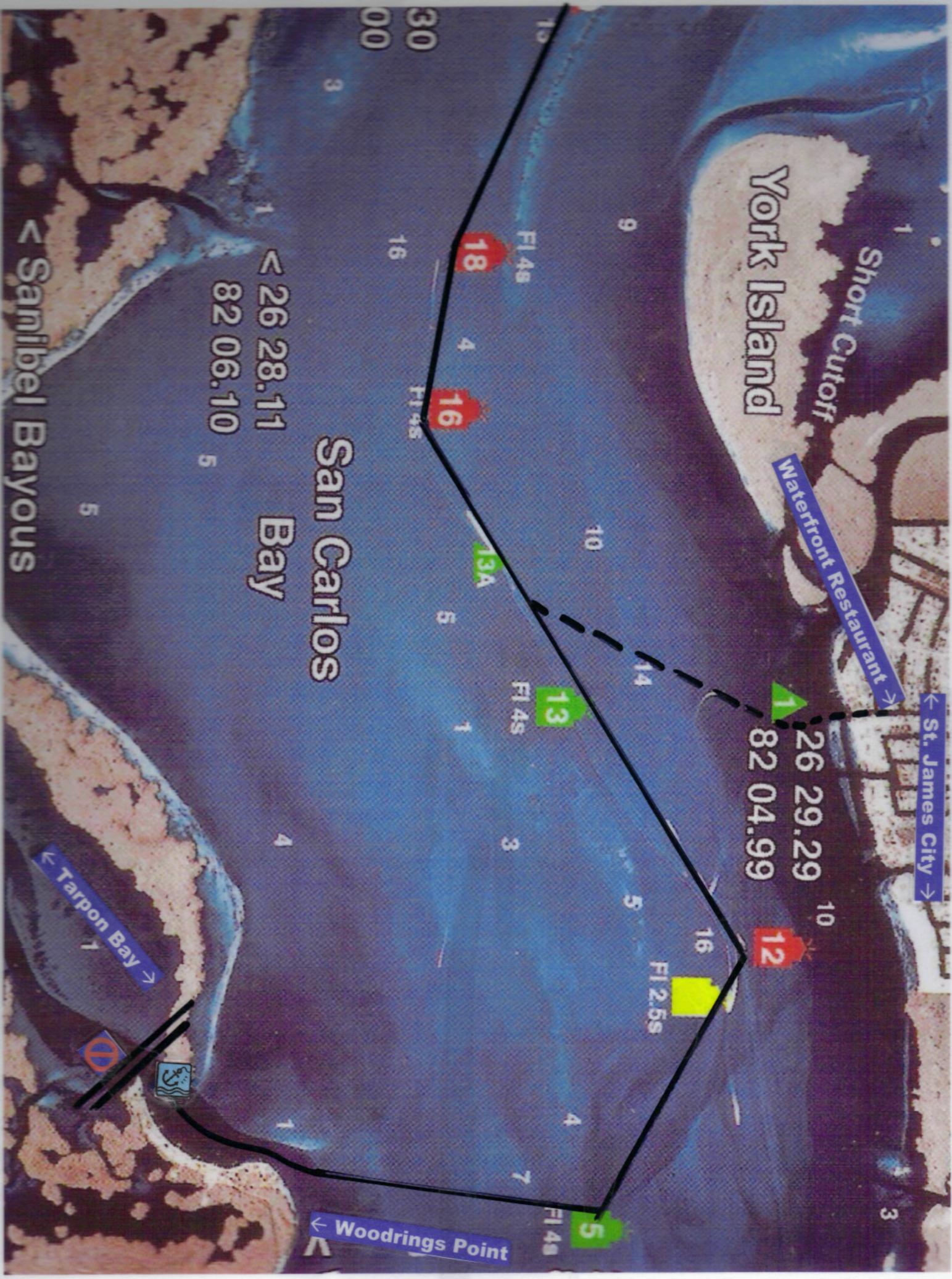
San Carlos Bay

26 28.11

82 06.10

Sanibel Bayous

Tarpon Bay



7.2
6.2



29
99

Navigational Rental Safety and Procedures

Navigational Rental: Navigational usage will be as agreed upon in advance and terms/rates stated on the standard boat rental agreement form. The engine key will be given to you upon receipt of the signed rental agreements and payment in full.

Outboard Motor Operation: Make sure engine is tilted all the way down prior to starting! Tilt switch is located on throttle handle. Motor must be in neutral to start. Red kill button must be attached for motor to start. Turn key to "on" position until buzzer quits. Turn key to start position until motor starts, then release key. Allow motor to warm up 2-3 minutes. Advance throttle handle slowly forward or backward for forward or reverse. Increase speed by slowly pushing throttle handle until desired speed is reached. Do not operate engine above 4800 RPM's as displayed on tachometer on steering console! Located at the bottom of the tachometer are 4 red lights. If the motor has an unexpected mechanical problem, these lights will flash and a warning buzzer will be heard. The most important light/buzzer will indicate an overheating situation. Slow engine and navigate out of channel. Turn motor "off" and drop anchor. Raise motor with tilt switch located on throttle handle. Visually inspect propeller for seaweed, grass, debris, etc... Remove if necessary. Lower motor tilt and restart. Motor should be ready to go. If buzzer continues, or any other red tachometer light remains on, turn off motor, remain anchored, and call for assistance.

Navigation Limits: Do not navigate vessel North of Intercoastal marker 72, or South of Sanibel Causeway. Navigation of vessel into Gulf of Mexico is prohibited. Remain inside marked channels, or along anchor routes shown on chart provided, and remain in at least waist deep waters at all tides/times. Navigation limits will be clearly marked on chart provided. Absolutely no navigation of vessel at night. Any navigation beyond these limits will result in forfeiture of deposit and immediate termination of lease with no refund.

Operators Responsibilities: Keep passengers seated while engine is running and vessel is underway. No bow riding allowed. Never forget the danger that boat propellers can inflict to persons in the water. Fasten gear to prevent shifting. Designate a “first mate” and have them assist with lines at docking and anchoring. Know your position and know where you are going. Maintain a safe speed at all times to avoid collision. Maintain a clear, unobstructed view forward at all times - “scan” the water back and forth. Keep an eye out for changing weather conditions, and act accordingly.

Weather: Weather can change rapidly so keep a “weather eye” out - watch for cloud build up, (especially rapid vertically rising clouds), sudden temperature drops, or sudden changes in wind direction. If severe weather approaches:

- Reduce speed, but keep enough power to maintain headway
- Put on lifejackets (if not already on) and stay seated
- Turn on running lights
- Head to nearest harbor area - if possible - such as: Pelican Bay, Cabbage Key, Safety Harbor, Roosevelt Channel, Wulfert Channel/Dinkens Bayou, St. James City.
- Anchor the vessel if necessary (outside of marked channels), making sure to use the bow anchors.

Anchoring: Be sure the anchor line is secured to the cleat, using all anchor line length provided. Bring the bow of the vessel into the wind or current. When you reach the spot you wish to anchor, place the engine in neutral. *Remember that you want the vessel to stay in at least waist deep water, even at low tide!* When the boat comes to a stop, slowly lower the anchor under any side rails. When all the anchor line is out, back down on the anchor in idle reverse speed to help set the anchor – if needed. Look around and use reference points (landmarks) in relation to the vessel to make sure you are not drifting. Check these points often. Turn on white anchor light atop pole on center console at night.

Waterway Signs: Boaters are always responsible for their wake and any damage caused by it. Obey all speed signs. Red markers are always even numbered and shaped like a triangle. Green markers are always odd numbered and shaped like a square. A red #2 symbolizes the entrance to a channel from the waterside. As you are returning to land, the numbers on the markers will increase. Keep the red markers on your right, and the green markers on your left.

- **Red Right Returning**

The Intercoastal waterway *returns* to Texas! So, the numbers on the markers will increase as you head north. Keep the red markers on your right when you are heading north. Keep the green markers on your right when you are heading south!

- **Red Right North**

Please respect our property and belongings and treat them like your own. We hope you enjoy your trip, please feel free to contact us should you need anything. (239-872-4356 * 407-448-1430)

Recommended Overnight Anchorages: (*favorites)

- *Pelican Bay (*easy navigation, calm, close to State beach access docks*)
- Useppa West shore (*boat wakes possible*)
- Pejuan Cove (*difficult to navigate into, calm, good fishing, fair kayaking*)
- *Fosters Bay (*calm, good fishing, good kayaking - to beach!*)
- Chadwicks (*usually calm, good kayaking*)
- *Roosevelt Channel, across from Tween Waters (*easy navigation, calm, great kayaking*)
- Wulfert Channel (Blind Pass)/Dinkens Bayou (*calm, great kayaking*)

Overnight Dockage: (call or radio channel 16 for avail/rates)

- Cabbage Key (*restaurant, gift shop, 239-283-2278*)
- Tween Waters Inn (*restaurants, resort amenities, access to Captiva/Sanibel, 239-472-5161*)

Recommended Day Anchorages: (no overnight)

- South end of Cayo Costa –South of Pejuan Point
- Wulfert Point (*good kayaking, good fishing*)
- Halloway Bayou at base of Power Lines (*good kayaking*)
- Tarpon Bay entrance at Woodrings Point (*great kayaking, good fishing – note: 2hrs to nearest overnight anchorage*)

Recommended Lunch Stops: (*favorites)

- *Cabbage Key
- *Barnacle Phil's in Safety Harbor
- Dock at Jensen's Marina and walk over to either *RC Otters, The Mucky Duck, or The Bubble Room. Afterward, *Queenies ice cream at Jensen's.
- Green Flash, between Jensen's and Tween Waters on Roosevelt Channel.
- Tween Waters Inn
- Waterfront Restaurant at St. James City (*note: 2hrs to nearest overnight anchorage*)